



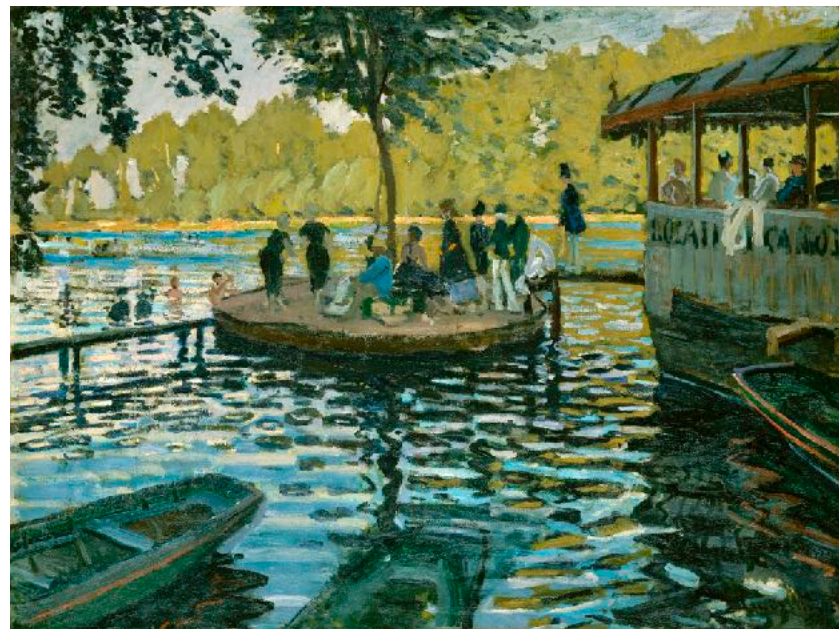
Arrival of the Normandy Train, Gare Saint-Lazare



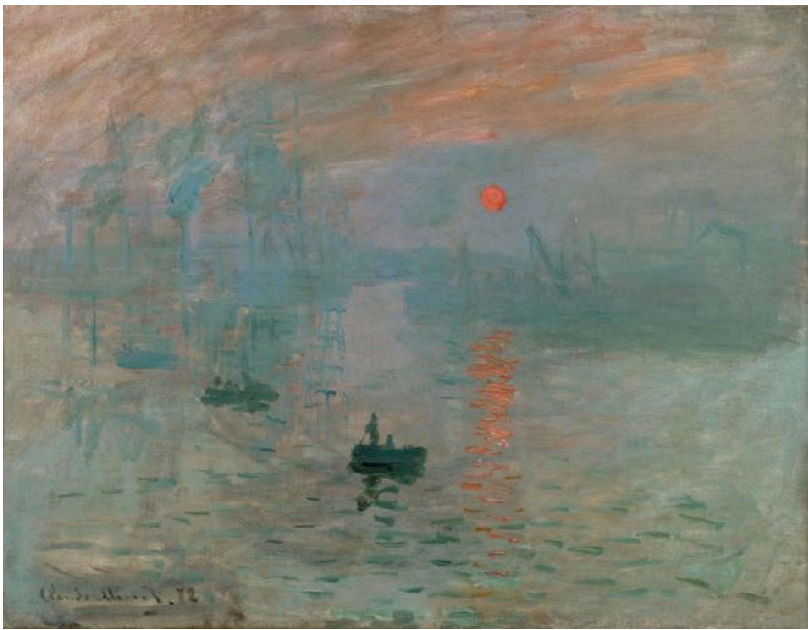
Garden at Sainte Adresse



Jean Monet on His Hobby Horse



La Grenouillère



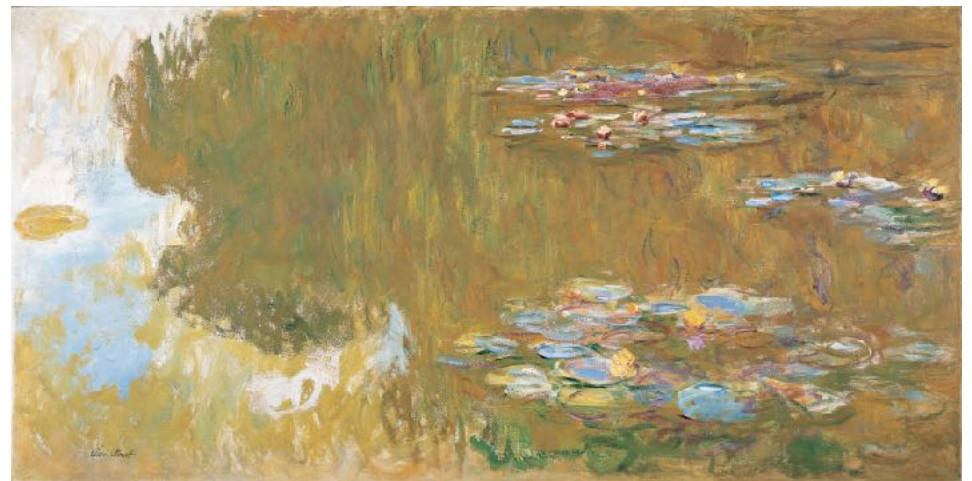
Impression, Sunrise



Haystacks: Snow Effect



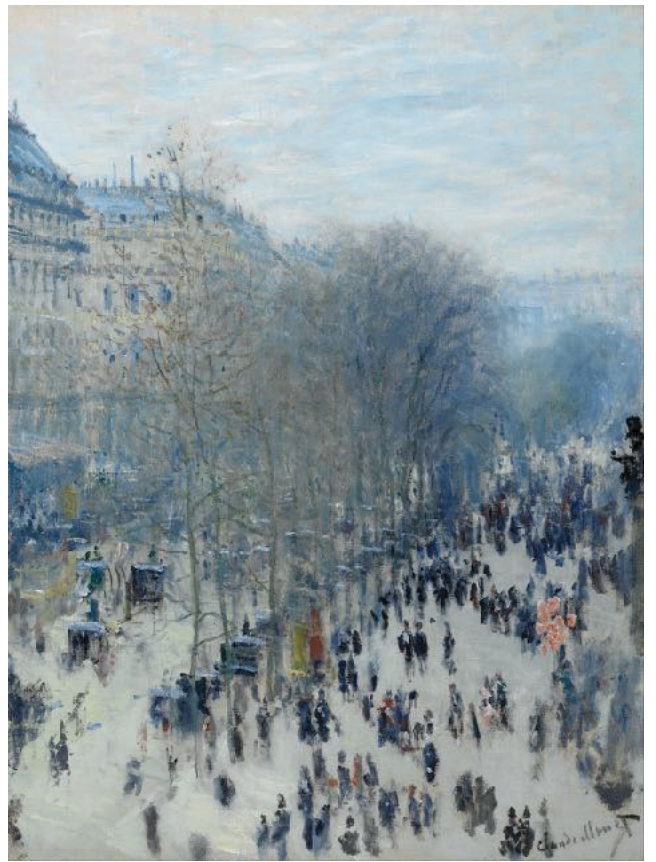
The Manneporte (Étretat)



The Water Lily Pond



**Bridge over a Pond of Water Lilies**



**Boulevard des Capucines**



**Water Lilies**



**Woman with Umbrella**